



PFC1 Series

CV JOINT PRECISION FORGING

OVERVIEW

Kingtime defines the driveline as the system which transmits torque from the transmission output up to the wheel hub. For this purpose, we produce parts which demand specialist production know-how and which demonstrate the high strength and tolerance requirements demanded by electric vehicles in particular. Best examples: constant velocity joints, shafts, motor shafts, engagement gear, parking gear, sprocket as well as intermediate and axle wheels for differential transmissions.

PRODUCTION PROCESSES

- Warm forging
- Cold forging
- Turning



More Precision Forging

PFC1 Series

CV JOINT PRECISION FORGING

Kingtime produces these cv joints (including TJ / ETJ, DOJ / EDJ, EPT, PTJ, BJ / EBJ, AR Structure) worldwide for a number of renowned system and automotive manufacturers. These parts are produced through a combination of warm and cold forging. Depending on the interface, the shaft area can already be punched during the forging process. Following cold forging, the internal surface is then ready for induction hardening.

FIXED BALL JOINT



EBJ



BJ



BJ

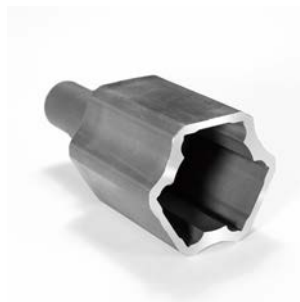
PLUNGE BALL JOINT



TJ



TJ



AR



AR



PTJ



TJ



ETJ